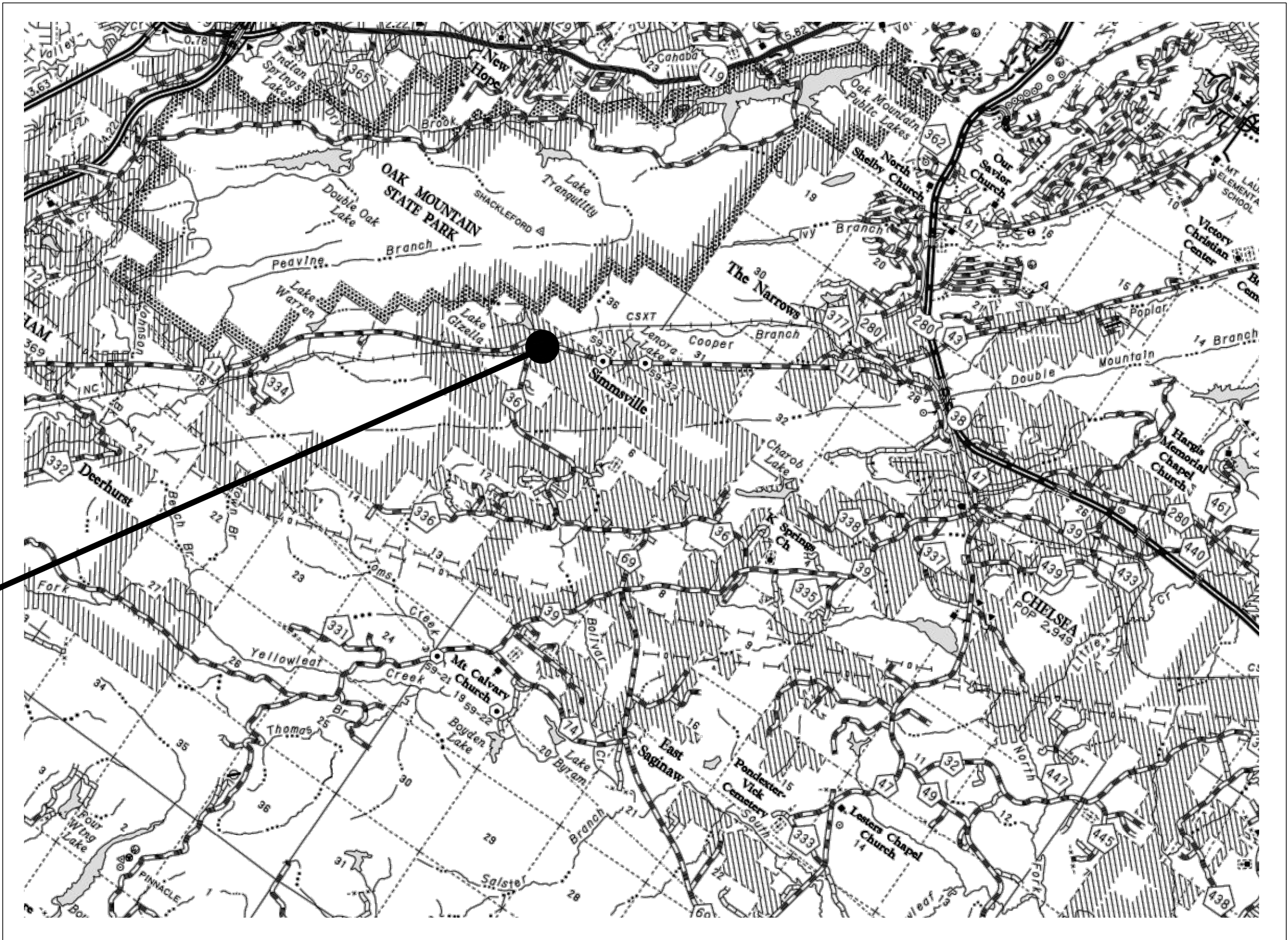


SHELBY COUNTY
HIGHWAY DEPARTMENT

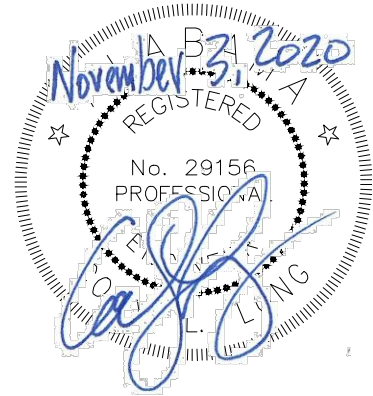
PLANS OF PROPOSED
PROJECT NO. SCP 59-911-19
TRAFFIC SIGNAL CONSTRUCTION
AT HIGHWAY 11 AND HIGHWAY 36
SHELBY COUNTY

REFERENCE PROJECT NO.	FISCAL YEAR	SHEET NO.	LAST SHEET NO.
SCP 59-911-19	2020	1	6

PROJECT LOCATION



VICINITY MAP



PLANS PREPARED BY:

SKIPPER
CONSULTING INC

3644 VANN ROAD SUITE 100
BIRMINGHAM, ALABAMA 35235
TELEPHONE: (205)655-8855

INDEX TO SHEETS

REFERENCE PROJECT NO.	FISCAL YEAR	SHEET NO.
SCP 59-911-19	2020	1B

<u>SHEET NO.</u>	<u>TITLE</u>	<u>DESCRIPTION</u>
1.	TITLE SHEET	
1B.	INDEX TO SHEETS	
1C.	TRAFFIC SIGNAL LEGEND	
2.	TRAFFIC SIGNAL NOTES	
3.	TRAFFIC SIGNAL QUANTITIES	
4.	TRAFFIC SIGNAL PLAN	TRAFFIC SIGNAL CONSTRUCTION PLAN – CR–11 AT CR–36
5.	TRAFFIC SIGNAL DETAILS	SPECIAL PROJECT TRAFFIC SIGNAL DETAILS
6.	TRAFFIC CONTROL PLAN	

2020 ALDOT STANDARD AND SPECIAL DRAWING REFERENCES

<u>INDEX</u>	<u>DRAWING NO.</u>	<u>DESCRIPTION</u>
74007	TCD–100	DETAILS OF TRAFFIC CHANNELIZING DEVICES
73001	T.S.D.–730–1	POWER SOURCE DETAIL FOR TRAFFIC SIGNALS AND TRAFFIC SIGNAL POLES WITH LIGHTING
73005	T.S.D.–730–2A	METAL TRAFFIC SIGNAL POLE AND LIGHTING INSTALLATION DETAILS (SHEET 2 OF 3)
73006	T.S.D.–730–2B	METAL TRAFFIC SIGNAL POLE AND LIGHTING INSTALLATION DETAILS (SHEET 3 OF 3)
73009	T.S.D.–730–4	TRAFFIC SIGNAL POLE FOUNDATION
73027	T.S.D.–730–10	BASE AND POLE MOUNTED CONTROLLER CABINET INSTALLATIONS
73033	T.S.D.–730–12	VIDEO DETECTION SYSTEM INSTALLATION
73051	T.S.D.–730–18	FLASHING YELLOW ARROW SIGN
73084	TSOP MO.30	TRAFFIC SIGNAL OPERATING PLAN
71032	IHS–710–21	DETAILS FOR LOCATION AND MOUNTING STANDARD FLAT PANEL SIGNS ON U–CHANNEL AND TUBULAR POSTS
71075	SHS–13	STANDARD HIGHWAY SIGNS
71085	SHS–22	STANDARD HIGHWAY SIGNS



RESPONSIBLE PE: Cody Long, P.E.	SUPERVISOR: Cody Long, P.E.	DESIGNER: Jennifer Roberson, E.I.	PLAN SUBMITTAL	SHELBY COUNTY HIGHWAY DEPARTMENT		SHEET TITLE	ROUTE
DATE: November 3, 2020	DATE: November 3, 2020	DATE: November 3, 2020	PRELIMINARY			INDEX TO SHEETS	CR–11

TRAFFIC SIGNAL AND ITS LEGEND

REFERENCE PROJECT NO.	FISCAL YEAR	SHEET NO.
SCP 59-911-19	2020	1C

ELECTRICAL BOXES

	EXISTING	REQUIRED
METALLIC PULL BOX		
FIBER OPTIC COMMBOX TYPE F1		
FIBER OPTIC COMMBOX TYPE F2		
TRAFFIC SIGNAL JUNCTION BOX		

CABLE IN CONDUIT

	EXISTING	REQUIRED
FIBER OPTIC CABLE IN CONDUIT (UNDERGROUND)		
FIBER OPTIC CABLE IN CONDUIT (UNDERGROUND WITH CONCRETE)		
FIBER OPTIC CABLE IN CONDUIT (BRIDGE ATTACHED)		
FIBER OPTIC CABLE (AERIAL INSTALLATION)		
INTERCONNECT CABLE IN CONDUIT (UNDERGROUND)		
INTERCONNECT CABLE (AERIAL INSTALLATION)		
CONDUIT		
ENCASEMENT		
OVERHEAD ELECTRIC		
BURIED ELECTRIC		

VEHICULAR DETECTORS

	EXISTING	REQUIRED
PRESENCE LOOP DETECTOR		
QUADRUPOLE LOOP DETECTOR		
6'x 6' LOOP DETECTOR		
VEHICLE DETECTION CAMERA		
VIDEO DETECTION ZONE		
RADAR DETECTION UNIT		

CABINETS

	EXISTING	REQUIRED
CABINET		

CAMERAS

	EXISTING	REQUIRED
CCTV CAMERA, FIXED		
CCTV CAMERA, PTZ		

MISCELLANEOUS EQUIPMENT

	EXISTING	REQUIRED
TRAFFIC SIGNAL HEAD		
TRAFFIC SIGNAL HEAD WITH BACKPLATE		
PEDESTRIAN SIGNAL HEAD		
8 FOOT PEDESTAL POLE AND PEDESTRIAN SIGNAL HEAD		
PEDESTAL MOUNTED FLASHING WARNING SIGNAL WITH SIGN		
PEDESTAL MOUNTED ILLUMINATED SCHOOL ZONE SIGN		
PUSH BUTTON ASSEMBLY		
SPAN/MASTARM MOUNTED SIGN		
OMNI DIRECTIONAL ANTENNA		
DIRECTIONAL ANTENNA		
EMERGENCY VEHICLE PREEMPTION SENSOR		
BLANKOUT MESSAGE SIGN		
TRAFFIC CONTROL CENTER		
HIGHWAY ADVISORY RADIO		
HUB BUILDING		
DYNAMIC MESSAGE SIGN (OVERHEAD)		
DYNAMIC MESSAGE SIGN (ROADSIDE)		
DYNAMIC MESSAGE SIGN (CANTILEVER)		

(NOTE: # INDICATES SIGNAL HEAD NUMBER)

POLES

	EXISTING	REQUIRED
METAL POLE		
CONCRETE POLE		
METAL MASTARM POLE		
CLASS 3 WOOD SERVICE POLE WITH DISCONNECT		
WOOD POLE		
DOWN GUY		
LUMINAIRE		

ABBREVIATIONS

AMERICAN WIRE GUAGE	AWG
CLOSED CIRCUIT TELEVISION	CCTV
CONDUIT.....	C
CURB AND GUTTER	C&G
DYNAMIC MESSAGE SIGN	DMS
EASTBOUND ROADWAY	EBR
EMERGENCY VEHICLE PREEMPTION	EVP
END ANCHOR	E/A
FLASHING BEACON	FB
GALVANIZED RIGID CONDUIT.....	GRC
GUARDRAIL	GR
HIGH DENSITY POLYETHYLENE	HDPE
HIGHWAY ADVISORY RADIO	HAR
INDIVIDUAL LOWERING DEVICE	ILD
INTELLIGENT TRANSPORTATION SYSTEM(S)....	ITS
JUNCTION BOX	JB
LEFT	LT
LIGHT EMITTING DIODE	LED
LIGHT POLE	LP
LUMINAIRE	LUM
MILEPOST.....	MP
NORTHBOUND ROADWAY	NBR
NON-METALLIC CONDUIT	NMC
PAN TILT ZOOM.....	PTZ
PRIMARY FIBER DISTRIBUTION UNIT.....	PFDU
PROPERTY LINE	PL
PUBLIC ACCESS CAMERA.....	PAC
PULL BOX.....	PB
RADIUS	R
RAILROAD	RR
RIGHT	RT
RIGHT OF WAY.....	ROW
ROADWAY	RDWY
SECONDARY FIBER DISTRIBUTION UNIT	SFDU
SCHOOL.....	SCH
SOUTHBOUND ROADWAY	SBR
STANDARD DRAWING	STD-DWG
STATION	STA
TRAFFIC CONTROL CENTER	TCC
TRAFFIC SIGNAL OPERATING PLAN	TSOP
TRANSPORTATION MANAGEMENT CENTER	TMC
TURNOUT	TO
VEHICLE DETECTION CAMERA	VDC
WESTBOUND ROADWAY	WBR

RESPONSIBLE PE: Cody Long, P.E.	SUPERVISOR: Cody Long, P.E.	DESIGNER: Jennifer Roberson, E.I.	PLAN SUBMITTAL	 ALABAMA DEPARTMENT OF TRANSPORTATION TRAFFIC DESIGN SECTION	NOT TO SCALE	SHEET TITLE	ROUTE
DATE: November 3, 2020	DATE: November 3, 2020	DATE: November 3, 2020	PRELIMINARY			TRAFFIC SIGNAL AND ITS LEGEND	CR-11

SUMMARY OF QUANTITIES

REFERENCE PROJECT NO.	FISCAL YEAR	SHEET NO.
SCP 59-911-19	2020	3

TOTAL	ITEM NO.	UNITS	DESCRIPTION
1	730C-000	LUMP SUM	FURNISHING AND INSTALLING TRAFFIC CONTROL UNIT (CR11 AT CR36)
1	730U-015	LUMP SUM	VIDEO DETECTION SYSTEM
2	730E-000	EACH	METAL TRAFFIC SIGNAL POLE FOUNDATION
1	730F-000	EACH	METAL TRAFFIC SIGNAL POLE WITH DUAL MAST ARMS (40 FT & 50FT)
1	730F-001	EACH	METAL TRAFFIC SIGNAL POLE WITH SINGLE 40FT MAST ARM
350	730L-003	LINEAR FOOT	1", NON-METALLIC CONDUIT
400	730L-005	LINEAR FOOT	2", NON-METALLIC CONDUIT
2	730N-000	EACH	LUMINAIRE EXTENSION ASSEMBLY, 12 FOOT
6	730P-022	EACH	VEHICULAR SIGNAL HEAD, 12 INCH, 3 SECTION, TYPE LED
1	730P-023	EACH	VEHICULAR SIGNAL HEAD, 12 INCH, 4 SECTION, TYPE LED
1	730R-022	EACH	CONTROLLER ASSEMBLY, TYPE III, 8 PHASE
100	756A-020	LINEAR FOOT	2" ELECTRICAL CONDUIT, 1 LINE, TYPE 5 INSTALLATION
70	756A-028	LINEAR FOOT	6" ELECTRICAL CONDUIT, 1 LINE, TYPE 5 INSTALLATION

RESPONSIBLE PE: Cody Long, P.E.	SUPERVISOR: Cody Long, P.E.	DESIGNER: Jennifer Roberson, E.I.	PLAN SUBMITTAL	SHELBY COUNTY HIGHWAY DEPARTMENT		SHEET TITLE	ROUTE
DATE: November 3, 2020	DATE: November 3, 2020	DATE: November 3, 2020	PRELIMINARY			SUMMARY OF QUANTITIES	CR-11

TRAFFIC SIGNAL PLAN SHEET

REFERENCE PROJECT NO	FISCAL YEAR	SHEET NO
SCP 59-911-19	2020	4

CONDUIT AND CONDUCTOR SCHEDULE			
CONDUIT	CONDUCTOR	FROM	TO
1-1" PVC	CONTROLLER POWER CABLE	DISCONNECT SWITCH	TRAFFIC SIGNAL CONTROLLER
1-1" PVC	LUMINAIRE POWER CABLE	DISCONNECT SWITCH	POLE 1
--	10C SIGNAL CABLE VIDEO DETECTION CABLE LUMINAIRE CABLE 4C SIGNAL CABLE VIDEO DETECTION CABLE	SIGNAL HEAD 5 CAMERA 2&5 LUMINAIRE SIGNAL HEADS 2&4 CAMERA 4	POLE 2
2-2" PVC	10C SIGNAL CABLE 4C SIGNAL CABLE VIDEO DETECTION CABLE LUMINAIRE CABLE	POLE 2	JUNCTION BOX A
1-6" HDPE 2-2" PVC	10C SIGNAL CABLE 4C SIGNAL CABLE VIDEO DETECTION CABLE LUMINAIRE CABLE	JUNCTION BOX A	JUNCTION BOX B
2-2" PVC	10C SIGNAL CABLE 4C SIGNAL CABLE VIDEO DETECTION CABLE	JUNCTION BOX B	TRAFFIC SIGNAL CONTROLLER
1-1" PVC	LUMINAIRE CABLE	JUNCTION BOX B	POLE 1
--	4C SIGNAL CABLE VIDEO DETECTION CABLE LUMINAIRE CABLE	SIGNAL HEADS 4&6 CAMERA 6 LUMINAIRE	POLE 1
1-2" PVC	4C SIGNAL CABLE VIDEO DETECTION CABLE	POLE 1	TRAFFIC SIGNAL CONTROLLER
1-1" PVC	PREEMPT CABLE	RAILROAD BUNGALOW	JUNCTION BOX E
1-2" HDPE		JUNCTION BOX E	JUNCTION BOX D
1-1" PVC		JUNCTION BOX D	JUNCTION BOX C
1-1" PVC		JUNCTION BOX C	TRAFFIC SIGNAL CONTROLLER

LOCAL CONTROLLER PROGRAMMING CHART													
PHASE	MIN INITIAL	DENSITY ACTIVE	PASSAGE	YELLOW	ALL RED	MAX 1	MAX 2	WALK	FDW	PED OMIT	MIN RECALL	PHASE OMIT	NON- LOCK
1		N								Y	N	Y	N
2	20.0	N	3.0	5.1	1.4	60.0	60.0			Y	Y	N	N
3		N								Y	N	Y	N
4	8.0	N	3.0	4.0	2.7	40.0	40.0			Y	N	N	Y
5	6.0	N	3.0	5.1	1.2	25.0	25.0			Y	N	N	N
6	20.0	N	4.0	5.1	1.4	60.0	60.0			Y	Y	N	N
7		N								Y	N	Y	N
8		N								Y	N	Y	N

SUPPORTING STRUCTURES				
POLE NO.	POLE LENGTH (APPROX.)	POLE LOCATION (APPROX.)	LUMINAIRE ARM EXT. LENGTH (APPROX.)	COMMENTS
1.	37FT	STA 14+03.4 LT36	12 FT	40FT MAST ARM
2.	37FT	STA 13+14.8 RT31	12 FT	40FT & 50FT MAST ARMS

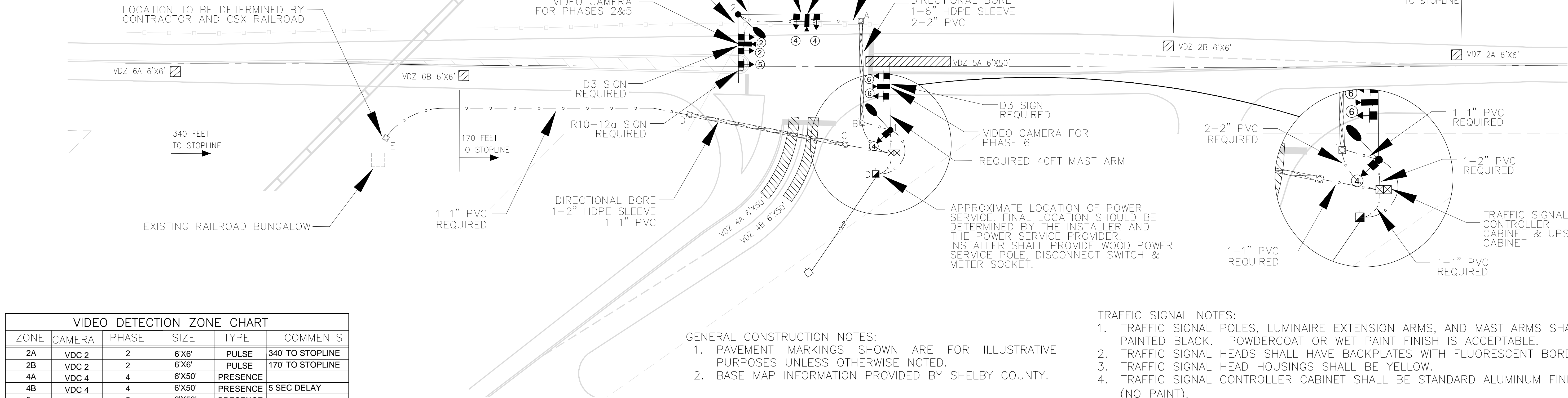
RAILROAD PREEMPTION TIMING TABLE	
MINIMUM WARNING TIME REQUIRED FROM RAILROAD	44.5
MIN. GREEN BEFORE PREEMPT	0.0
PREEMPT OVER FLASH	YES
PREEMPT NON-LOCK	YES
SELECTIVE YELLOW CLEAR	3.5
SELECTIVE ALL RED CLEAR	2.0
TRACK GREEN	26.5
TRACK YELLOW CLEAR	5.1
TRACK ALL RED CLEAR	1.4
TRACK PHASES	6
MIN. DWELL GREEN	10.0
DWELL PHASES	NONE
CYCLE PHASES	5
RETURN YELLOW CLEAR	5.1
RETURN ALL RED CLEAR	1.2
EXIT PHASES	2+6
CALLS	NONE

NOTE: ALL TIMES SHOWN ARE IN SECONDS

PHASING DIAGRAM			
1 OMIT	2 ←	3 OMIT	4 ↑
5 ↶	6 →	7 OMIT	8 OMIT

REQUIRED SIGNS	
D3-1 COUNTY ROAD 11	R10-12a LEFT TURN YIELD ON FLASHING YELLOW ARROW
D3-1 COUNTY ROAD 36	
30" X 36"	

REQUIRED SIGNAL HEADS	
5	2,4,6



VIDEO DETECTION ZONE CHART					
ZONE	CAMERA	PHASE	SIZE	TYPE	COMMENTS
2A	VDC 2	2	6'X6'	PULSE	340' TO STOPLINE
2B	VDC 2	2	6'X6'	PULSE	170' TO STOPLINE
4A	VDC 4	4	6'X50'	PRESENCE	5 SEC DELAY
4B	VDC 4	4	6'X50'	PRESENCE	
5	VDC 5	5	6'X50'	PRESENCE	
6A	VDC 6	6	6'X6'	PULSE	340' TO STOPLINE
6B	VDC 6	6	6'X6'	PULSE	170' TO STOPLINE

PAY ITEM 730C-000 ESTIMATED EQUIPMENT AND MATERIAL SCHEDULE	
DESCRIPTION	
MISC. HARDWARE #14 SIGNAL CABLE, IMSA 20-1	
POWER SERVICE, 240 VOLTS, UNINTERRUPTIBLE POWER	
SUPPLY (UPS) W/TRANSFER SWITCH,	
TRAFFIC SIGNAL HEAD BACKPLATES WITH REFLECTIVE BORDER	

RAILROAD NOTES

- CONTRACTOR IS TO CONTACT CSX RAILROAD BEFORE CONSTRUCTION EFFORTS ARE BEGUN. THE PURPOSE OF THIS DISCUSSION AND/OR MEETINGS WOULD BE TO DISCUSS RAILROAD PREEMPTION CONNECTION DETAILS AND ALSO CONDUIT CONNECTION DETAILS.
- THE CONTRACTOR SHALL ROUTE CONDUIT AND SET A JUNCTION BOX NEAR THE EXISTING RAILROAD BUNGALOW AS SHOWN. THE CONTRACTOR SHALL COIL APPROXIMATELY 50' OF RAILROAD PREEMPT CABLE IN THE JUNCTION BOX TO PREVENT ANY UNNECESSARY SPLICES.
- THE CONNECTION OF CONDUIT AND THE RAILROAD PREEMPT CABLE INTO THE EXISTING RAILROAD BUNGALOW SHALL BE COMPLETED BY CSX RAILROAD. THE CONTRACTOR SHALL COORDINATE WITH THE RAILROAD AS NECESSARY TO COMPLETE THE CONNECTION.

GENERAL CONSTRUCTION NOTES:

- PAVEMENT MARKINGS SHOWN ARE FOR ILLUSTRATIVE PURPOSES UNLESS OTHERWISE NOTED.
- BASE MAP INFORMATION PROVIDED BY SHELBY COUNTY.

TRAFFIC SIGNAL NOTES:

- TRAFFIC SIGNAL POLES, LUMINAIRE EXTENSION ARMS, AND MAST ARMS SHALL BE PAINTED BLACK. POWDERCOAT OR WET PAINT FINISH IS ACCEPTABLE.
- TRAFFIC SIGNAL HEADS SHALL HAVE BACKPLATES WITH FLUORESCENT BORDER.
- TRAFFIC SIGNAL HEAD HOUSINGS SHALL BE YELLOW.
- TRAFFIC SIGNAL CONTROLLER CABINET SHALL BE STANDARD ALUMINUM FINISH (NO PAINT).
- D3-1 SIGNS SHALL BE EDGE LIT AND MOUNTED ABOVE THE CENTER OF THE THROUGH LANES BETWEEN TRAFFIC SIGNAL HEADS. SEE DETAILS SHEET 5.
- MAST ARMS SHALL BE UPSWEEP TYPE.
- LUMINAIRE FIXTURES SHALL BE COBRAHEAD TYPE WITH LED FIXTURE.
- TRAFFIC SIGNAL CONTROLLER SHALL BE A NEMA 8 PHASE CONTROLLER. THE MANUFACTURER AND SERIES SHALL BE SIEMENS M60 SERIES OR ECONOLITE COBALT SERIES
- REQUIRED UPS SHALL COMPLY WITH SPECIFICATIONS INCLUDED IN NOTES 532-534 SHEET 2 THIS PLAN SET.

RESPONSIBLE PE: Cody Long, P.E. DATE: November 3, 2020	SUPERVISOR: Cody Long, P.E. DATE: November 3, 2020	DESIGNER: Jennifer Roberson, E.I. DATE: November 3, 2020	PLAN SUBMITTAL PRELIMINARY	SHELBY COUNTY HIGHWAY DEPARTMENT	30 0 30 HORIZ SCALE (FEET)	SHEET TITLE	ROUTE
						TRAFFIC SIGNAL PLAN SHEET	CR-11

TRAFFIC SIGNAL DETAILS

REFERENCE PROJECT NO	FISCAL YEAR	SHEET NO
SCP 59-911-19	2020	5



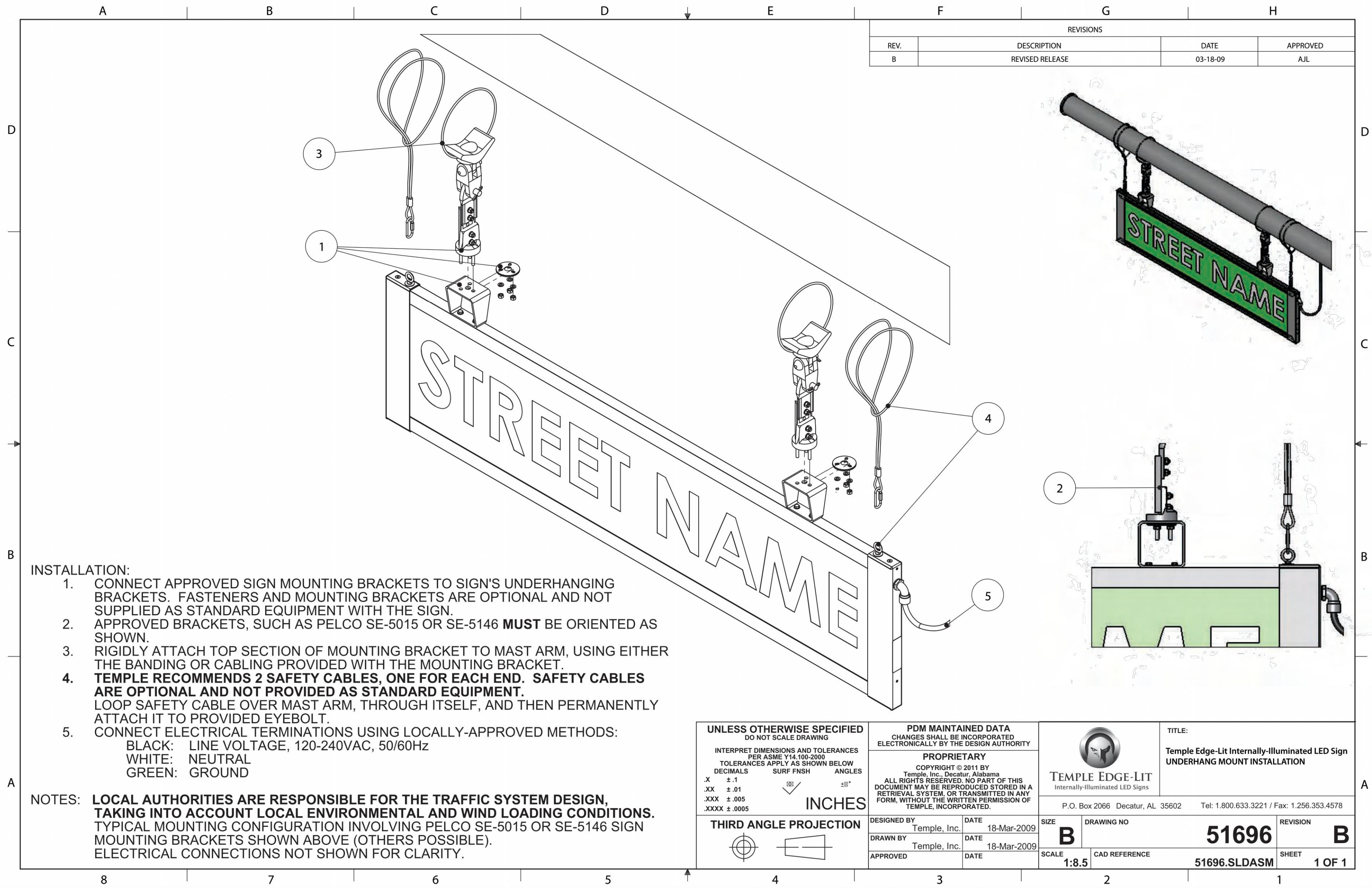
County Road 11



County Road 36

EDGE LIT LED SIGN NOTES:

- STREET NAME SIGNS SHALL BE TEMPLE EDGE LIT LED STREET NAME SIGNS OR APPROVED ALTERNATE.
- STREET NAME SIGNS SHALL HAVE STANDARD GREEN BACKGROUNDS AND WHITE BORDER AS REQUIRED BY THE MUTCD LATEST EDITION.
- STREET NAME SIGNS SHALL HAVE THE SHELBY COUNTY ROUTE SHIELD PLACED TO THE LEFT OF THE TEXT AS SHOWN IN THE DETAILS ABOVE. THE SHIELD SHALL SHOW THE APPROPRIATE COUNTY ROADWAY NUMBER.
- STREET NAME SIGNS SHALL BE PLCED AS CLOSE AS POSSIBLE TO THE CENTER OF THE APPROACH OVER WHICH THE SIGN SHALL FACE. FINAL SIGN POSITIONING SHALL BE APPROVED BY SHELBY COUNTY.
- THE STREET NAME SIGNS SHALL BE MOUNTED UNDER THE MAST ARM USING THE UNDERHANG TYPE MOUNT UNLESS OTHERWISE APPROVED BY SHELBY COUNTY.
- THE SIGN MANUFACTURER SHALL SIZE THE STREET NAME SIGN ACCORDING TO THE REQUIRED TEXT AND SYMBOLS AND SUBMIT TO SHELBY COUNTY FOR APPROVAL PRIOR TO CONSTRUCTION.



- INSTALLATION:
- CONNECT APPROVED SIGN MOUNTING BRACKETS TO SIGN'S UNDERHANGING BRACKETS. FASTENERS AND MOUNTING BRACKETS ARE OPTIONAL AND NOT SUPPLIED AS STANDARD EQUIPMENT WITH THE SIGN.
 - APPROVED BRACKETS, SUCH AS PELCO SE-5015 OR SE-5146 **MUST** BE ORIENTED AS SHOWN.
 - RIGIDLY ATTACH TOP SECTION OF MOUNTING BRACKET TO MAST ARM, USING EITHER THE BANDING OR CABLING PROVIDED WITH THE MOUNTING BRACKET.
 - TEMPLE RECOMMENDS 2 SAFETY CABLES, ONE FOR EACH END. SAFETY CABLES ARE OPTIONAL AND NOT PROVIDED AS STANDARD EQUIPMENT.** LOOP SAFETY CABLE OVER MAST ARM, THROUGH ITSELF, AND THEN PERMANENTLY ATTACH IT TO PROVIDED EYEBOLT.
 - CONNECT ELECTRICAL TERMINATIONS USING LOCALLY-APPROVED METHODS:
BLACK: LINE VOLTAGE, 120-240VAC, 50/60Hz
WHITE: NEUTRAL
GREEN: GROUND

NOTES: **LOCAL AUTHORITIES ARE RESPONSIBLE FOR THE TRAFFIC SYSTEM DESIGN, TAKING INTO ACCOUNT LOCAL ENVIRONMENTAL AND WIND LOADING CONDITIONS.** TYPICAL MOUNTING CONFIGURATION INVOLVING PELCO SE-5015 OR SE-5146 SIGN MOUNTING BRACKETS SHOWN ABOVE (OTHERS POSSIBLE). ELECTRICAL CONNECTIONS NOT SHOWN FOR CLARITY.

UNLESS OTHERWISE SPECIFIED DO NOT SCALE DRAWING INTERPRET DIMENSIONS AND TOLERANCES PER ASME Y14.100-2009 TOLERANCES APPLY AS SHOWN BELOW DECIMALS SURF FINISH ANGLES X ±.1 XX ±.01 XXX ±.005 XXXX ±.0005 INCHES THIRD ANGLE PROJECTION	PDM MAINTAINED DATA CHANGES SHALL BE INCORPORATED ELECTRONICALLY BY THE DESIGN AUTHORITY PROPRIETARY COPYRIGHT © 2011 BY Temple, Inc., Decatur, Alabama ALL RIGHTS RESERVED. NO PART OF THIS DOCUMENT MAY BE REPRODUCED STORED IN A RETRIEVAL SYSTEM, OR TRANSMITTED IN ANY FORM, WITHOUT THE WRITTEN PERMISSION OF TEMPLE, INCORPORATED.		 Temple Edge-Lit Internally-Illuminated LED Signs P.O. Box 2066 Decatur, AL 35602 Tel: 1.800.633.3221 / Fax: 1.256.353.4578	TITLE: Temple Edge-Lit Internally-Illuminated LED Sign UNDERHANG MOUNT INSTALLATION	
	DESIGNED BY Temple, Inc. DATE 18-Mar-2009	DATE 18-Mar-2009	SIZE B	DRAWING NO 51696	REVISION B
APPROVED		DATE	SCALE 1:8.5	CAD REFERENCE 51696.SLDASM	SHEET 1 OF 1

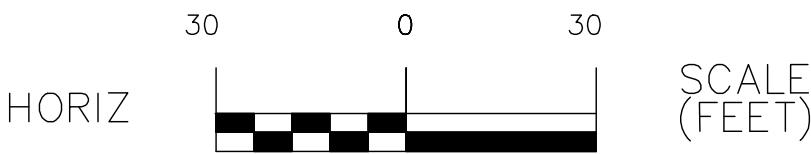
RESPONSIBLE PE: Cody Long, P.E.

SUPERVISOR: Cody Long, P.E.

DESIGNER: Jennifer Roberson, E.I.

PLAN SUBMITTAL

SHELBY COUNTY
HIGHWAY DEPARTMENT



SHEET TITLE

ROUTE

DATE: November 3, 2020

DATE: November 3, 2020

DATE: November 3, 2020

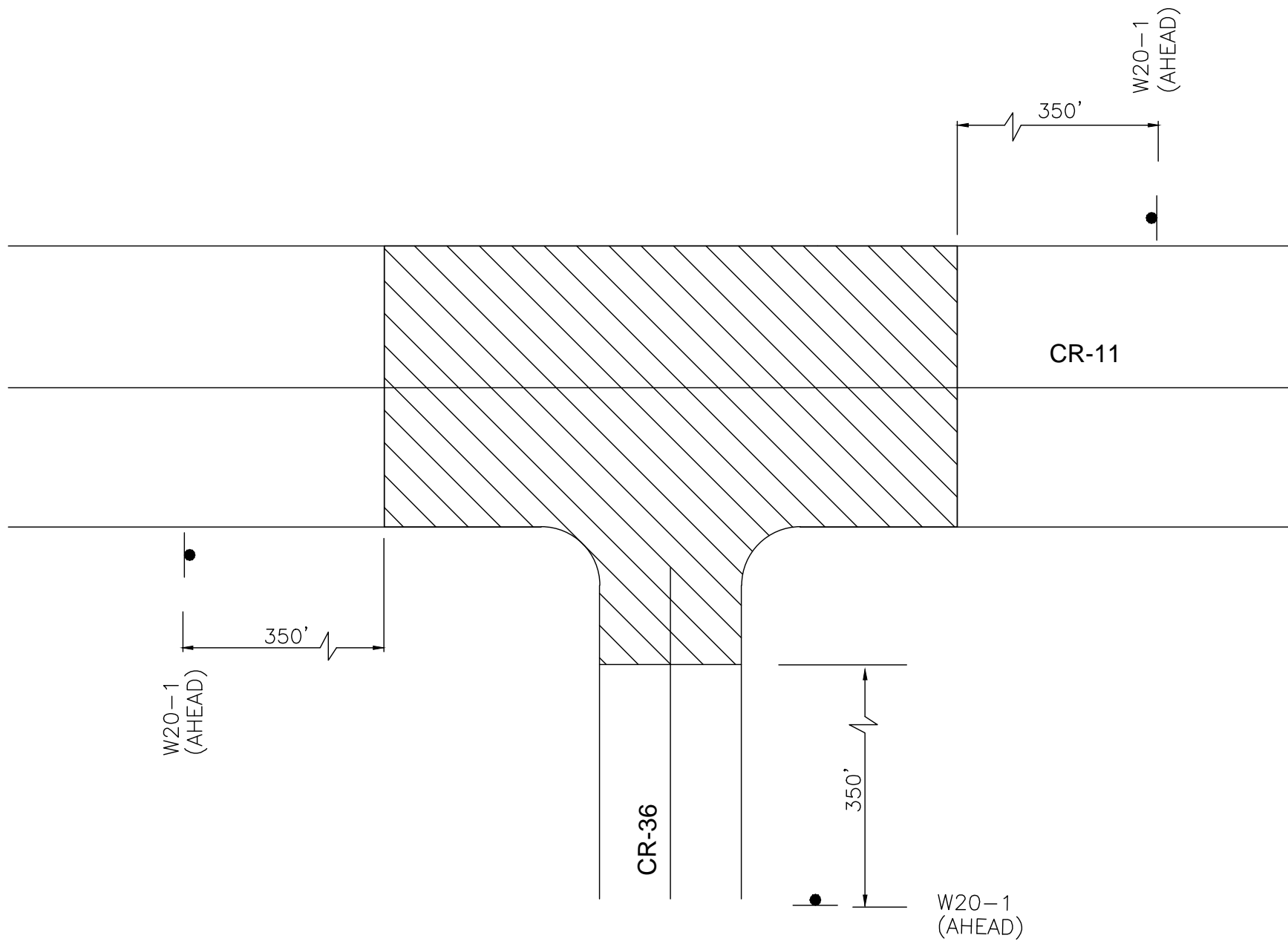
PRELIMINARY

TRAFFIC SIGNAL DETAILS

CR-11

TRAFFIC CONTROL PLAN

REFERENCE PROJECT NO	FISCAL YEAR	SHEET NO
SCP 59-911-19	2020	6



NOTE:
NO LANE CLOSURES SHALL BE PERMITTED
BETWEEN THE HOURS OF 7:00AM TO 8:30AM
AND 4:00PM TO 6:00 PM.

TRAFFIC CONTROL NOTES:

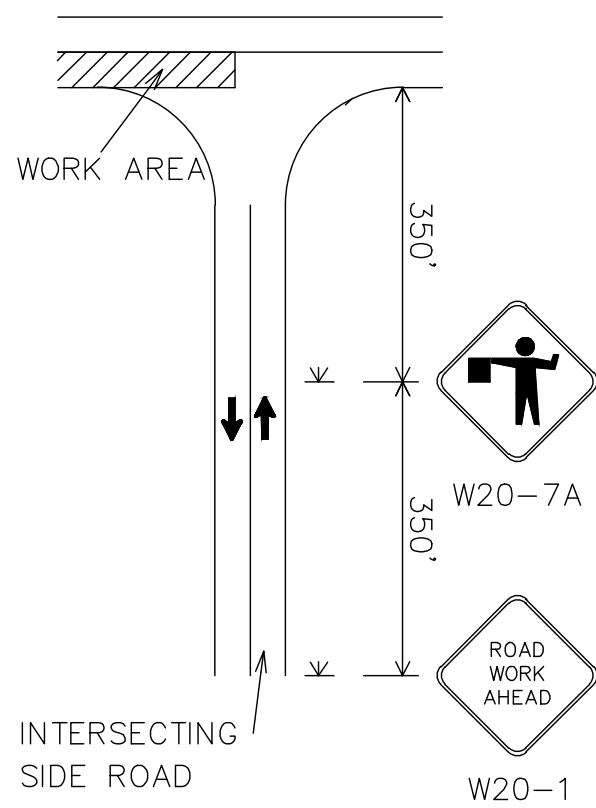
- WORK AREAS COVERED BY TRAFFIC CONTROL SCHEME #2 ARE MORE THAN TWO FEET FROM THE TRAVEL WAY BUT LESS THAN 15 FEET. (FOUNDATIONS FOR POLES, CONTROLLER FOUNDATIONS, CABINET WIRING, ETC.)
- ALL TRAFFIC CONTROL DEVICES SHALL BE IN CONFORMANCE WITH THE MANUAL ON UNIFORM TRAFFIC CONTROL DEVICES (MUTCD), LATEST EDITION.
- THE TRAFFIC CONTROL SCHEMES SHOWN HAVE BEEN DEVELOPED IN CONFORMANCE WITH THE MUTCD. THE DEVICES SHOWN REPRESENT CONDITIONS KNOWN DURING PLAN DEVELOPMENT. IN THE EVENT ACTUAL PHYSICAL CONDITIONS WARRANT ADDITIONAL CONTROL DEVICES, IT SHALL BE THE RESPONSIBILITY OF THE CONTRACTOR TO INSTALL SAME AS OUTLINED IN THE MUTCD.
- ALL THE TRAFFIC CONTROL DEVICES REQUIRED FOR WORK WITHIN THE ROADWAY SHALL BE IN PLACE PRIOR TO THE CONTRACTOR BEGINNING WORK.
- ALL PORTABLE SIGNS SHALL BE REMOVED WHEN NOT IN USE OR AT THE END OF THE WORK DAY.
- ALL TRAFFIC CONTROL DEVICES SHOWN IN SCHEME #1 SHALL REMAIN IN PLACE DURING ALL CONSTRUCTION.
- ALL TRAFFIC CONTROL SCHEMES ARE BASED UPON A DESIGN SPEED OF 50 MILES PER HOUR.
- PERMANENT OR TEMPORARY CONSTRUCTION SIGNS WHICH ARE NOT APPLICABLE OR INAPPROPRIATE FOR THE CURRENT CONDITIONS SHALL BE COVERED OR REMOVED.
- HAZARDOUS CONDITIONS ON OPEN ROADWAYS SUCH AS PAVEMENT DROP OFFS; CONSTRUCTION MATERIALS VEHICLES, OR EQUIPMENT STORED OR PLACED WITHIN THE ROADWAY RIGHT OF WAY; AND OPEN TRENCHES ACROSS OR NEAR THE ROADWAY SHALL NOT BE ALLOWED UNLESS THE INSTALLER IS ON SITE AND WORKING, AND PROPER TRAFFIC CONTROL MEASURES ARE BEING TAKEN.
- THE INSTALLER SHALL KEEP OPEN ROADWAYS CLEAN AND FREE OF CONSTRUCTION DEBRIS, DIRT, LOOSE GRAVEL, OR OTHER MATERIAL THAT MAY CAUSE HAZARDOUS DRIVING CONDITIONS.
- TRAFFIC CONTROL DEVICES SHALL MEET THE STANDARD MATERIAL AND INSTALLATION REQUIREMENT SPECIFIED IN THE CURRENT EDITION OF THE ALDOT STANDARD SPECIFICATIONS FOR HIGHWAY CONSTRUCTION.
- IT SHALL BE THE RESPONSIBILITY OF THE CONTRACTOR TO SECURE THE WORK AREA.

LEGEND:

- POST MOUNTED SIGN
- REQUIRED SIGN (PORTABLE)
- CHANNELIZING DRUMS
- FLAGGER STATION
- WORK AREA
- DIRECTION OF TRAVEL

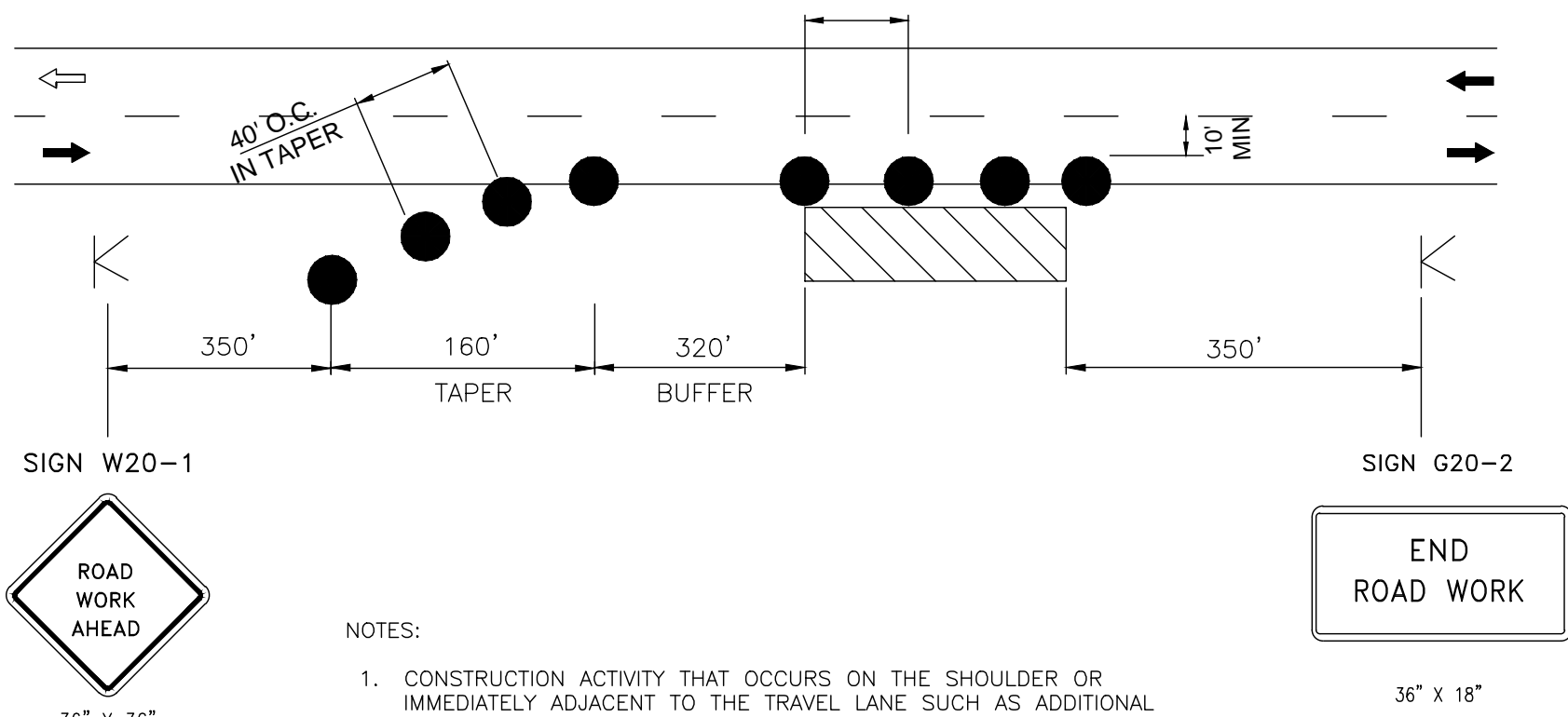


TRAFFIC CONTROL FOR INTERSECTING SIDE ROADS WITHIN WORK AREA



NOTE:
THE W20-1 AND W20-7A SIGNS TO BE USED ON INTERSECTING ROADS SHALL BE 48"X48" IN SIZE. THE TEMPORARY MOUNTED W20-1 ROAD WORK AHEAD SIGN SHOWN ON THE SIDE ROAD WILL NOT BE REQUIRED IF ONE IS ALREADY POST MOUNTED ON THE SIDE STREET.

EQUAL SPACING NOT TO EXCEED 80'

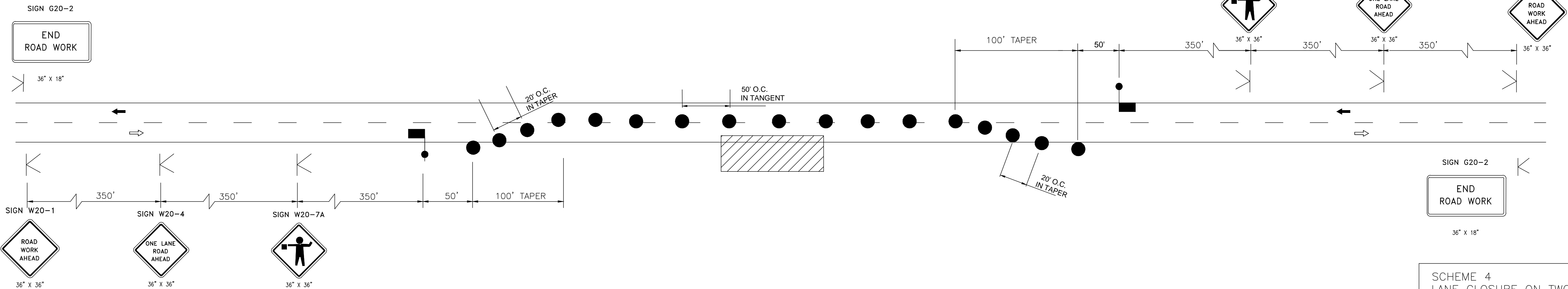


NOTES:

- CONSTRUCTION ACTIVITY THAT OCCURS ON THE SHOULDER OR IMMEDIATELY ADJACENT TO THE TRAVEL LANE SUCH AS ADDITIONAL LANE CONSTRUCTION, POLE FOUNDATIONS, BASE/PAVE ACTIVITY, ETC. AND DO NOT REQUIRE A LANE CLOSURE.
- SIMILAR TRAFFIC CONTROL MUST BE IN PLACE IF CONSTRUCTION OCCURS ON THE OTHER SIDE OF ROAD. IF CONSTRUCTION IS ON BOTH SIDES OF ROAD, CONTROL DEVICES MUST BE IN PLACE FOR BOTH DIRECTIONS OF TRAVEL.

SCHEME 3

SHOULDER WORK WITH MINOR ENCROACHMENT (NO LANE CLOSURE)



SCHEME 4
LANE CLOSURE ON TWO LANE ROAD USING FLAGGER

RESPONSIBLE PE: Cody Long, P.E.

SUPERVISOR: Cody Long, P.E.

DESIGNER: Jennifer Roberson, E.I.

PLAN SUBMITTAL

SHELBY COUNTY
HIGHWAY DEPARTMENT

DATE: November 3, 2020

DATE: November 3, 2020

DATE: November 3, 2020

PRELIMINARY



SCALE
(FEET)

SHEET TITLE

ROUTE

TRAFFIC CONTROL PLAN

CR-11